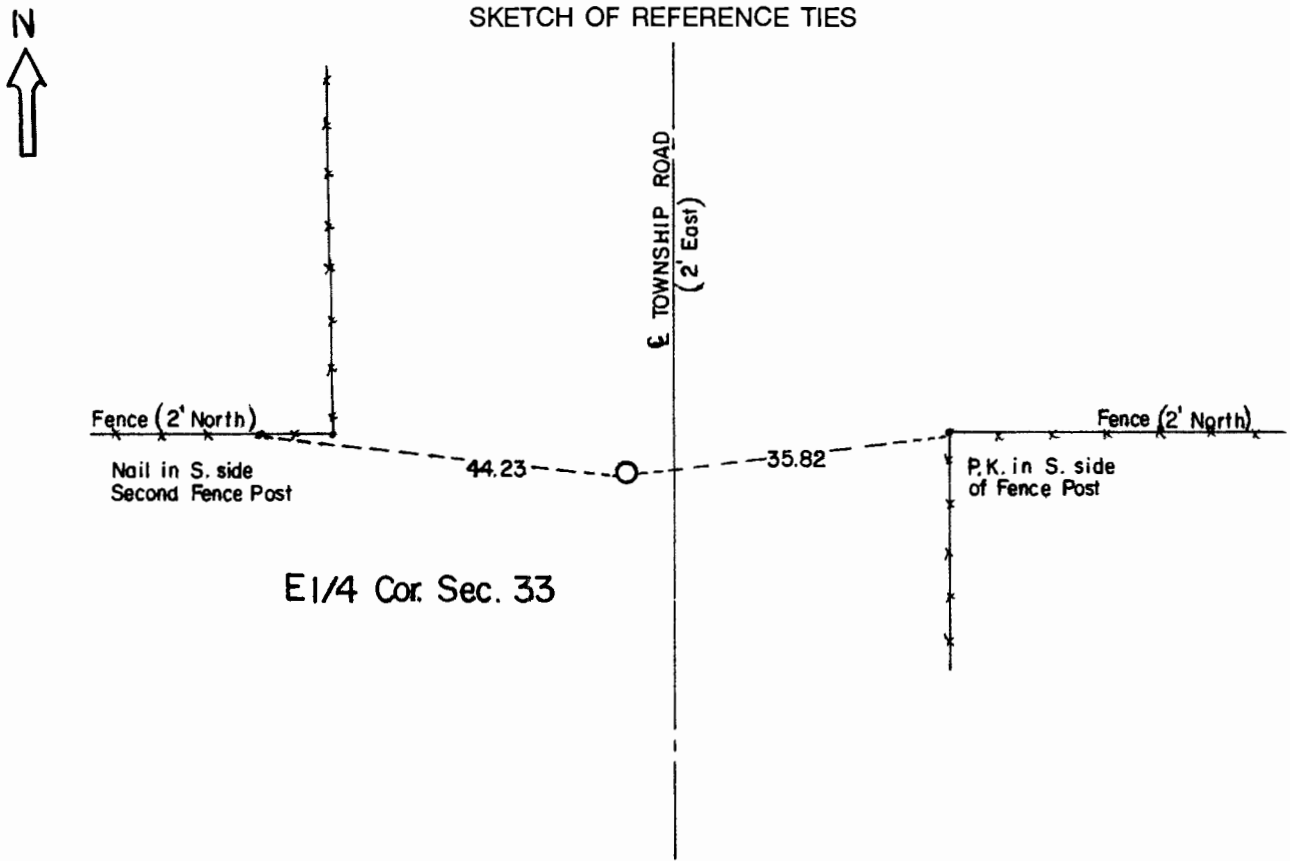


# CERTIFICATE OF LOCATION OF GOVERNMENT CORNER

**East Quarter** Corner of Section **33** , Township **108** , Range **41** 5th P.M.  
STATE OF MINNESOTA, County of Murray.

**Statement:** Aug. 22, 1989 - Found a capped iron pin and a stone.  
Placed Mn/DOT Cast Iron Monument.



Statement of evidence relative to this corner location is on the back of page.

I hereby certify that this document and the data contained herein was prepared by me or under my direct supervision and that I am a duly Registered Land Surveyor under the laws of the State of Minnesota.

Duane A. Bonnema      Nov 6, 1989  
Duane A. Bonnema      Date

Minnesota Registration No. 14895

OFFICE OF THE COUNTY RECORDER  
COUNTY OF MURRAY **NOV 15 1989**

I hereby certify that this document was filed in the County Recorder's office at \_\_\_\_ M. on the \_\_\_\_ day of \_\_\_\_ A.D., 19\_\_

County Recorder Duane A. Bonnema

By \_\_\_\_\_, Deputy  
DOCUMENT NO. \_\_\_\_\_

**East Quarter Cor. Sec. 33 T108N-R41W**

**Statement:**

- Aug. 1861 Original Government Land Office Surveyor L. G. M. Fletcher records in his field notes, "Built mound with trench pits, charred stake, per instructions."*
- June 1907 J. W. Woolstencroft, County Surveyor, records in the County Surveyor's Record Book, page 200, "Government Corner" and that the Corner monument was a stone.*
- Aug. 22, 1989 Duane A. Bonnema, L.S. Reg. No. 14895, found a capped iron surveyor's pin. Dug below the iron pin and found a 18 in. x 12 in. x 9 in. stone 1.5 ft. below the road surface. Natural ground was found 1 ft. below the road surface. Placed a Minnesota Department of Transportation Cast Iron Monument at the road surface.*